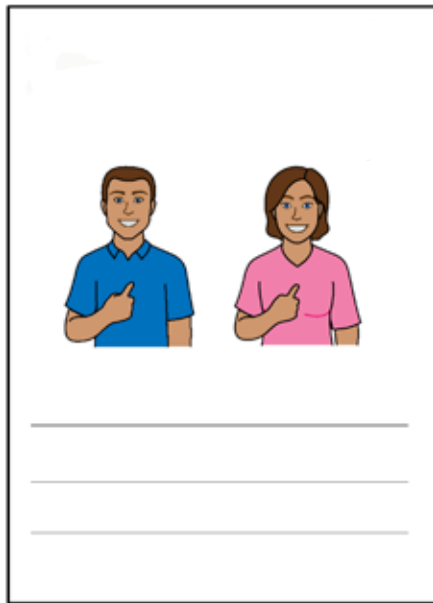


PERSON CENTRED ACTIVE SUPPORT POLICY



Better Together Assoc Inc



Easy English



Hard words

This book has some hard words.

The first time we write a hard word

- the word is in **blue**
- we write what the hard word means.

You can get help with this book



You can get someone to help you

- read this book
- know what this book is about



- find more information.

About this book



This book is about our **person centred active support** policy.

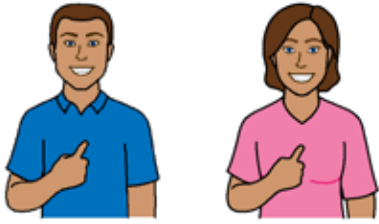


Person centred means we

- listen to you
- help you think about what you want from your life.



Active support means we will help people with disability to have control in their life.



Person centred

We will talk to you about what you want from your life



- now

and



- in the future.



We will listen to you.



We will help you to meet your **goals**.

Goals are things you want to happen.



We will talk to you about **risks**.

Risks are things that could cause problems.

Active support

We want to help people with disability make their own



- choices

- decisions



- goals

- relationships.



We will help you to

- learn

- know your goals



- live a good life.

We will give you the help you need to be

- confident



- independent



- successful.



For example we want you to

- choose relationships you want



- go to places you like



- be part of your community.



More information

For more information contact Better Together



Call 07 5499 2230



Email contact@bettertogether.net.au



National Relay Service

TTY 133 677

Then ask for 1300 588 688

Speak and Listen 1300 555 727

Then ask for 1300 588 688

Internet relay users connect to the NRS

Then ask for 1300 588 688

